

ST. BROTHER ANDRE CHS

STUDENT & PARENT

HANDBOOK

REVISED 2024/2025

A Prayer for Our Patron, St. Andre Bessette 2

Lord our God,
friend of the lowly,
you gave your servant, St. Andre Bessette,
a great devotion to St. Joseph and a special
commitment to the poor and afflicted.
Through his intercession, help us to follow his
example of prayer and love and so come to
share with him in your glory.

We ask this in the name of Jesus, the Lord.
Amen



To learn more about St. Andre
Bessette, visit the official website
for St. Joseph's Oratory [here](#).

Learn more about our
school's patron!

St. Brother Andre CHS Land Acknowledgement₃



SBA is a proud supporter of the [Orange Shirt Society!](#)



Learn more about [Truth and Reconciliation!](#)

Saint Brother Andre is situated on the ancestral lands and waters of the Anishinabe, Wendat and Haudenosaunee First Peoples who still walk with us today. We recognize the closest Indigenous communities as the Chippewas of Georgina Island and the Mississaugas of Scugog Island.

From the East, South, West and Northern directions we are grateful to live on the gift that is this land. We strive to live harmoniously with those around us, and leave more than we take for the faces unseen.

We thank the Creator for opening our minds to learn, our ears to listen and our hearts to love and embrace others.

Let's Get on the Same Page!



Click on the Cardinal on the upper right hand corner to navigate back to this page.

SBA is a very busy place. Managing your schedule and workload, as well as understanding the key expectations we have of all members of our community is key to your success. Be sure to review all of the links below. All students, parents and guardians have been provided with these expectations prior to the start of the school year so that we can begin with a common understanding.

Be Proud to be a Cardinal!

Code and Conduct and Progressive Discipline

Be a Good Neighbour!

Access to and the Use of School and Premises

Bullying - Prevention and Intervention

Personal Devices and Digital Discipleship

SBA: Your Home Away From Home!

The Student Activity Fee

School Uniform, Civvies Days and Spirit Days

Lockers and Private Property

Smoking, Vaping, Cannabis & Substance Use

Attendance & Related Procedures

Assessment and Evaluation

Driving and Parking at School

Services Available at School

Other Useful Links

CLICK THE
LINKS!

#wearecardinals

Be Proud to be a Cardinal!



5

Think about it... You'll spend nearly **2 MILLION MINUTES** of your life in high school. Wouldn't you want to make the most of it? Wouldn't you want to take every opportunity to learn about who you are and how you can use all of your wonderful, God-given talents? It is our hope that by the end of your journey at SBA, you will go confidently into the world, with your faith as your guiding light, and look upon your time here with pride and fondness because of the wonderful memories you will make and life-long friendships you will develop. It is our goal that students become lifelong learners, critical thinkers and innovators. In addition to facilitating a high-quality learning experience for all students, we aim to foster opportunities to instill virtues and values, modelled on the example of Jesus Christ, that inspire service to the greater community. Get involved and make a difference. We believe in each and every one of you! Have a fabulous school year!

Ms. Cosentino, Principal



Our Motto

“So I say to you, Ask, and it will be given you; search, and you will find; knock, and the door will be opened for you.”

Luke 11:9

St. Andre Bessette is known as God's Doorkeeper. For more than 40 years, he held the door at Notre Dame College. He greeted all visitors and tended to their needs. We are called to show the same love and hospitality to all.

“The door to heaven is the heart of Jesus. The key to this door is prayer and love.”

St. Andre Bessette



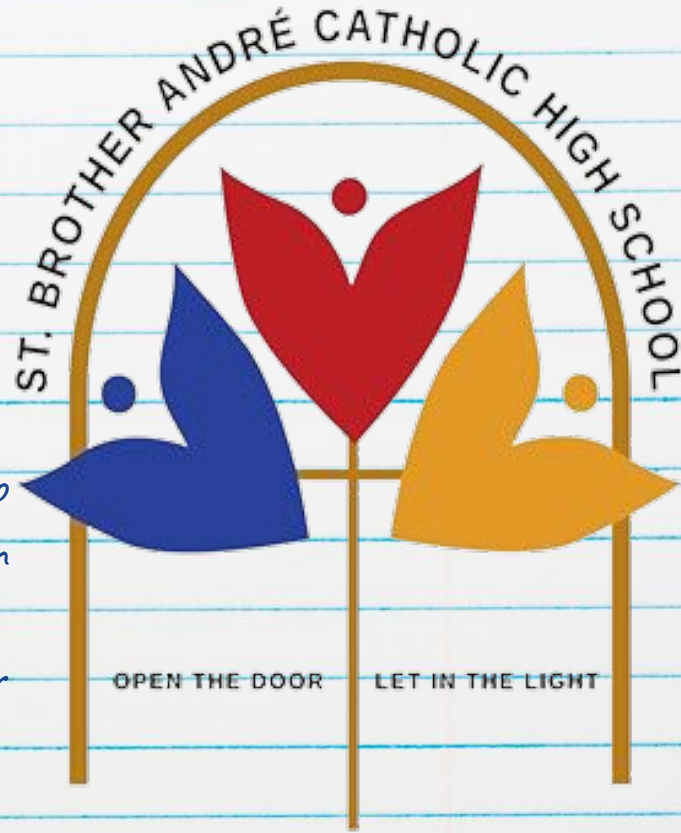
The original motto, *In Lumine Tuo...* translates to “In Your Light.” By putting our faith into action, we bring this light to others - our community and the world. To live and learn in the Light of Christ is a choice we make everyday.

“You are the light of the world. A city built on a hill cannot be hid. No one after lighting a lamp puts it under the bushel basket, but on the lampstand, and it gives light to all in the house. In the same way, let your light shine before others, so that they may see your good works and give glory to your Father in heaven.” *Matthew 5: 14-16*

14-16

Our Crest

The design is enclosed by a shape that resembles a door, a reference to St. Brother Andre's job as a doorkeeper at Notre Dame College. The "flower" in the centre is meant to represent the Lily of St. Joseph, for whom St. Brother Andre had a special devotion. The 'petals' are different colours (our school colours) which represent the diversity of our school community and the small circles are meant to show the petals as people. There are three petals, in keeping with our Trinitarian teachings. The "stem" of the lily is a cross, which is a central image of our faith - it holds us all together. Tucked within the door is our school motto, 'Open the door. Let in the light.'



Designed by Isabella Vignando, 2024

The Cardinal: No Ordinary Bird...

Did you know that the Cardinal has a special connection our Church? The red plumage reminded the early European settlers of North America of the Cardinals of the Catholic Church and they were so named.

There is an ancient Haudenosaunee teaching about how the Cardinal got its colour. It goes that when Creator was deciding what to name his creation and what it would look like, the Cardinal stepped forward and said that it want to be a bold colour so that no matter the season, it would be seen. It wanted a bold call so that no matter where it flew, it would be heard. So, Creator decided to make the Cardinal the boldest colour that existed in nature and blessed it with an unmistakable call. God has blessed each of you with gifts that will allow you to be seen and heard in this often loud and chaotic world. When you think it's not possible, remember St. Brother Andre: the little man that was underestimated his entire life. His example is proof that boldness, even through the humblest of expression, can yield miracles. His Oratory in Montreal is a symbol of someone who used his God-given gifts to be seen and heard. **Channel your inner Cardinal always.**





St. Brother André CHS

Community Commitments

Open the Door. Let in the Light.

We are committed to building a school culture centred on the life and legacy of St. Andre Bessette.

Commitment to Faith and Spiritual Growth

Emulating the deep faith and spiritual dedication of St. Andre Bessette, we are devoted to nurturing the spiritual growth of our students. We pledge to provide a supportive and enriching environment where students can explore and strengthen their faith, guided by the principles of love, kindness, and devotion.

Commitment to Service

Inspired by the humble and selfless life of St. Andre Bessette, our school is dedicated to fostering a culture of service. We commit to instilling in our students the values of compassion, generosity, and dedication to helping others, both within our community and beyond.

Commitment to Perseverance and Excellence

Reflecting the perseverance and commitment to excellence demonstrated by St. Andre Bessette, our school is committed to fostering resilience and a strong work ethic in our students. We aim to inspire them to overcome challenges, strive for their personal best, and pursue excellence in all their endeavors.



Code of Conduct and Progressive Discipline

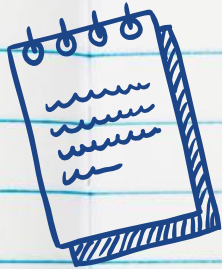


Our school should be a safe space where all students and staff are able to work to their full potential. We all accept collective responsibility in creating a safe, caring and inclusive school community. We show respect for everyone and everything. Refer to Policy 202 (Student Discipline) and 218 (Code of Conduct) for a complete listing of expectations, in addition to PPM 128 from the Ministry of Education.

Consequences for inappropriate behaviour will include:

- progressive discipline
- suspension and/or expulsion from school, depending on the circumstances and the nature of the infraction

Note: A protocol is in place with York Regional Police to help ensure compliance with laws and to develop a positive working relationship and attitude about acceptable student behaviour at school and in the community.



In a Nutshell...

If what you are doing:

1. Interferes with learning - yourself or others...
2. Hurts someone, degrades, causes harm or damage...
3. Prevents you from being the best version of yourself...

STOP IT!

YOU SHOULDN'T BE DOING IT!

When you respect everyONE and everyTHING, you'll keep yourself on the right track.

NOTICE TO ALL STUDENTS!

No Excuses!



Own your mistakes and learn from them.

**IF YOU DIDN'T DO YOUR WORK, OWN IT!
THEN WORK WITH ME TO GET IT DONE.**

IF YOU DON'T GET IT, ASK FOR HELP!

If you don't succeed at first, you're learning!
Work with me to improve next time.

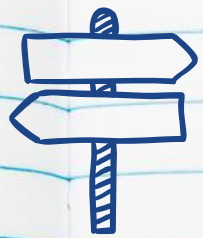
**Breaking the rules is a choice.
Accepting the consequences isn't.**

Set high standards for yourself
I believe in you. You should too!

**ONLY YOU CAN BE RESPONSIBLE
FOR YOUR OWN LEARNING!**



Be a Good Neighbour!



Students are permitted to leave the school during their lunch and have the privilege of accessing a number of local businesses. We are fortunate to have the support of a number of local businesses for school and community events.

While in the community, students are not only subject to the school's Code of Conduct, but to local by-laws, federal and provincial legislation. They are expected to behave in full compliance. Failure to do so will not only result in school-level consequences but can also result in local sanctions. Students are reminded to:

- Be courteous and respectful to business owners and staff
- Place all garbage in town/city-provided receptacles
- Comply with any business-specific policies and requirements



Note: Local businesses are within their right to refuse service, ban patrons from their establishments as well as contact local law enforcement as needed.

Access to the School and Premises



1. All students must be in full uniform from bell to bell. When in the Main Office, Guidance Office or Library, **no uniform = no service.**
2. With the exception of guest speakers and school board personnel, visitors to the school during the day are not permitted.
3. Students from other schools are not permitted on school grounds unless they are accompanied by their teacher for a school related event or athletic game/tournament. All instances where students are found to be on school property will be treated as **TRESPASSING** and subject to related consequences.
4. All visitors, including parents/guardians, must report to the Main Office immediately upon entering the building.
5. All visitors must sign in and wear identification badges.
6. If a parent or guardian is dropping something off for their child(ren), it must be left in the Main Office. The student(s) will be called down at an appropriate time to retrieve the item.



Students with an eLearn Course or Spare

14

Students who have an eLearn course on their timetable during Periods 1, 2 and 3 are expected to report to the Library Learning Commons or the cafeteria, where a member of the St. Brother Andre staff will be on duty. The cafeteria will be closed during Period 4 for cleaning, at which time students will have access to the Library Learning Commons. Note: attendance is not taken.

The hallways, washrooms and stairwells are not appropriate spaces for these purposes. Students who are found to be accessing these areas will be redirected to the cafeteria or Library Learning Commons.

Students are expected to be in full uniform during these times and in full compliance with the Code of Conduct.

We Share the Air!

St. Brother Andre CHS is a fragrance-free environment. Your cooperation is expected regarding the following:

- Avoid using fragrances or scented products such as perfume, cologne or scented soap while at school.
- If fragrances or scented products must be used, do so sparingly. A general guideline for fragrances and scented products is that they should not be detectable more than an arm's length away from you.

Please understand that this issue is about the serious adverse health reaction that can occur as a result of the product you are wearing.

The success of our fragrance/scent-safe initiative will depend upon the thoughtfulness, consideration, and cooperation of everyone within the school community.

Bullying Prevention and Intervention: Policy 223



16

As members of a Catholic learning community and as followers of Jesus Christ, we are expected to uphold the dignity of all people and treat one another with utmost respect at all times. We believe:

1. All forms of bullying - physical, verbal, emotional, digital - are insidious forms of violence.
2. All students, educators and education workers have the right to a working and learning environment free from bullying, harassment, discrimination, threats or violence.
3. We all have a role to play in bring an end to all forms of bullying.

All members of the SBA Community are urged to report all instances of bullying to an Administrator. Any non-emergency reports can also be filed using REPORT IT.



Personal Devices and Digital Discipleship



Now, more than ever, we must all be extremely aware of our digital footprint. The implications of content we generate online can have far-reaching consequences, including future educational and employment opportunities. Remember:



1. Under no circumstances should any photos or videos be taken in classrooms or common areas without the expressed permission of staff or students.

2. Do not post photos or videos of any staff or students on any digital or social media platform without consent.

3. Do not be in possession of, create, distribute or request any sexually explicit images or video.

4. Any perceived bullying that occurs on social media platforms, where students or staff are degraded in any way, is subject to at least school-based consequences. Refer to Policy 311 - Digital Discipleship.

5. York Regional Police will be contacted if needed to address potential illegal activity.



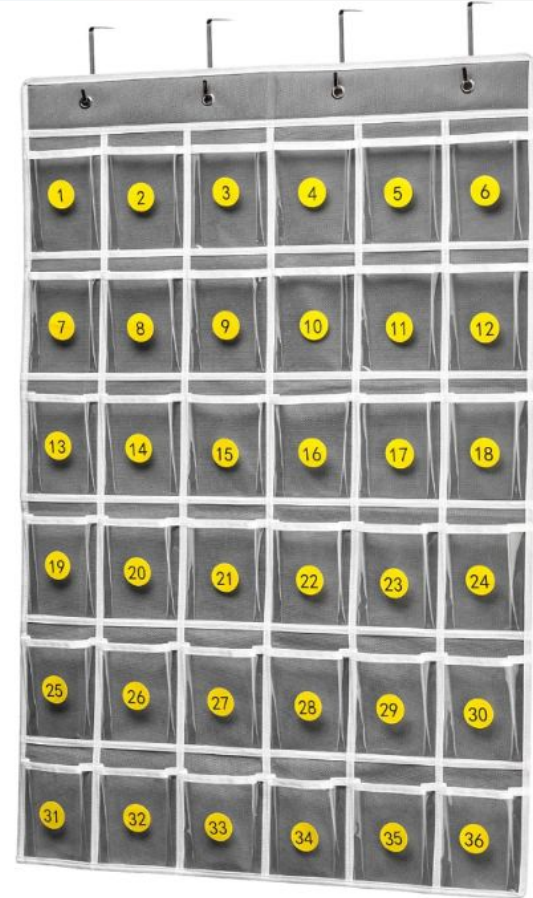
Personal Electronic Devices at School

1. Students are strongly encouraged to bring their own laptops, Chromebooks and any other tablet for educational purposes. Students accept full responsibility for any personal belongings they bring to school.
2. Students may use their personal electronic devices to access the school WIFI but all activities are subject to the YCDSB Code of Conduct and Acceptable Use Guidelines.
3. Any inappropriate use of personal electronic devices is subject to progressive disciplinary action, depending on the severity of the infraction. This can include incidents which occur outside of school hours and off school property, depending on the circumstances.
4. Effective September 2024, the Ministry of Education has announced a formal cell phone ban during instructional time (refer to the next page). Full cooperation and compliance with school procedures is expected.



Cell Phone Ban During Instructional Time

- A pocket cell phone holder has been provided for each classroom near the teacher's desk for safe keeping.
- As the teacher takes attendance, each student will be assigned a number and will deposit his/her phone in the pocket.
- If a student does not comply, he/she will be sent to the office and will be assigned a detention by an Administrator.
- Subsequent refusals to cooperate will result in additional detentions and suspension for defiance.
- In the final 5 minutes of class, students will be directed to retrieve their phones in an orderly fashion.
- Students will have full access to their phones during lunch, transition times and while on their spare.



School Uniform, Civvies Days, Spirit Days



School Uniform

We wear a uniform to show solidarity with the members of our learning community. It also contributes to the safety of our learning environment. By enrolling at SBA, students, parents and guardians agree to **comply fully** with wearing of the uniform. Failure to comply will result in students being sent home.

1. All school uniform items must be purchased from DGN Kilters.
2. Students are expected to arrive at school in FULL uniform everyday: solid black shoes (no coloured laces); grey pants with SBA embroidery and a golf shirt.

ALL OTHER ITEMS ARE OPTIONAL!

3. Hats, caps, bandanas or decorative headwear are not permitted.
4. Any additional solid white or black undershirt must be tucked in and not protrude at the sleeves or beyond the school golf shirt (no stripes or other designs must be visible).



School Uniform, Civvies Days, Spirit Days

Spirit Days

1. Spirit Wear may **ONLY** be worn on **Thursdays**.
2. Spirit Wear refers **ONLY** to tops - council/club/team t-shirts, hoodies or sweatshirts. It **DOES NOT** include sweatpants or shorts.

Note: When school spirit wear is available for purchase, links will be emailed to the community. Orders are placed directly on the website and the items are delivered to the school. Distribution will be coordinated by the Main Office staff.

Civvies Days

3. The Administration will approve Civvies Days for students as a break from wearing the school uniform throughout the school year.
4. **Modest attire** that is appropriate for a learning environment is expected.
5. Clothing that displays offensive language and/or imagery is not acceptable.
6. Students who are inappropriately dressed for school will be sent home.





Lockers and Private Property

1. The lockers that students are assigned to are property of St. Brother Andre CHS. As such, the Administration reserves the right to search lockers and its contents when necessary.
2. Do not share your locker combination with anyone, unless you are sharing your locker with another person that has been approved by Administration.
3. Refrain from bringing valuables to school and storing them in lockers.
4. Only school-issued Dudley locks can be used on lockers. All other models of locks will be cut off, at which point the contents of locker will be removed and brought to the Main Office.
5. If a student misplaces his or her lock, they may be purchased from the Main Office at a cost of \$15.00 (new), \$5 (old)

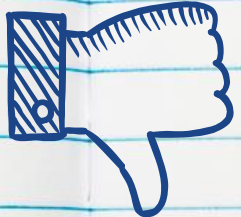


Smoking, Vaping, Cannabis & Substance Use



In accordance with Policy 610:

- There is no smoking (cigarettes, e-cigarettes, vapes) on or within school property.
- The use, sharing and/or possession or trafficking of cannabis, illegal drugs and related paraphernalia, or alcohol is strictly prohibited.



Consequences for non-compliance will include **one or more** of the following:

1. Progressive discipline, suspension and/or expulsion from school
2. Report to the Smoke Free Ontario Unit, along with related fines; for more information click here.
3. Report to York Regional Police, along with related charges if applicable.

Attendance



Absence: Parents are required to report their son/daughter's absence before 8:30 through the Safe Arrival Line. Students who skip class will be subject to progressive discipline.

Early Leaves: If a student is required to leave school early, parents/guardians must pre-arranged it through the Safe Arrival App. Students should report to the Main Office before leaving for an Admit Slip.

Vacation: An Extended Vacation Leave form must be submitted to the office two weeks in advance. Homework is not provided and the student must keep up with missed work. **These absences are highly discouraged.**

Regular attendance at school is an important factor in overall student success and achievement. Research shows that not only do students do better academically, but they also achieve a greater sense of overall wellness. Students learn the necessary skills related to organization, responsibility and accountability - all beneficial to long-term success in school and life in general.

REVISED School Schedule:

Warning Bell	8:25-8:30	5 minutes - morning music with 30 second warning
Period 1	8:30-9:45	75 minutes
Travel time	9:45-9:50	5 minutes
Period 2	9:50-11:05	75 minutes
Travel time	11:05-11:10	5 minutes
Period 3	11:10-1:10	120 minutes total 40 minutes for lunch 75 instructional minutes
<i>Note: the lunch period is determined by the location of the Period 3 classroom.</i>	Lunch A: 11:10-11:50 Lunch B: 11:50-12:30 Lunch C: 12:30-1:10	40 minutes 40 minutes 40 minutes
Travel time	11:10-1:15	5 minutes
Period 4	1:15-2:30	75 minutes

Attendance: The 15 Minute Rule



- Attendance must be completed within the first 15 minutes of each period.

PERIOD 1

- Students will be received in class for the first 15 minutes.
- Students who are in class by 8:30am are marked PRESENT.
- Students who arrive between 8:30-8:45am are marked LATE.
- All other students not present by 8:45am are marked ABSENT.
- Students who arrive from 8:45am and onward must report to the Main Office to sign in.

PERIOD 2, 3, AND 4

- Students who arrive in class by the start of each period will be marked PRESENT; students who arrive anytime thereafter are marked LATE.
- Student who do not arrive to class are marked ABSENT.
- Student who arrive in excess of 15 minutes late are to be sent to the Main Office to speak with his/her Vice Principal.
 - Parent/Guardian contact after 3 lates
 - Conduct Report to the VP after 3 additional lates
 - Detentions, suspension

Attendance Monitoring Strategy

Regular attendance and its accurate monitoring is a shared responsibility of the school team, parents/guardians and students - see Policy 228b - Attendance (Secondary).

Lateness to School or Class

Lateness to school and class is a breach of the Student Code of Conduct and progressive discipline will ensue.

Step 1: After 3 lates, the teacher contacts parents/guardians.

Step 2: teacher submits Conduct Report for every third late thereafter. Consequences will include **detention** and **suspension** from school.

Excessive Absenteeism

Where a student's absenteeism is approaching 5 consecutive days, the teacher will submit a Conduct Report to the Vice Principal. Attendance will be monitored in intervals of 5 days; when a student is approaching 15 days of consecutive absenteeism, the VP can refer to the student to an Attendance Counsellor, who will work with the student and family to determine the next appropriate steps.

Assessment & Evaluation at SBA



SUMMATIVE ASSESSMENTS/ASSIGNMENTS

Due dates for summative assignments will be announced when the assignment is distributed. Students are expected to submit all summative assignments on time.

- *If you are absent on the day that the assignment is due, you are required to submit the assignment to your classroom teacher:*
 - *by emailing the ycdsbk12.ca, D2L, Google Classroom or as agreed upon by your teacher*
 - *in-person to your classroom teacher before the start of the school day*
 - *through a responsible classmate/peer (you will be held accountable for submission)*
- *If you are present for part of the day or leave for any reason (planned or unforeseen) you are required to submit your assignment to your classroom teacher before leaving the school.*
- *At a teacher's discretion, progressive deductions of 5%, 10% and zero will be given for late work.*

Assessment & Evaluation at SBA

TESTS AND IN-CLASS EVALUATIONS

Dates for tests and in-class evaluations will be provided to you in advance. You are expected to be in class for these tasks.

- *If you are absent and your absence is related to a school function/event, you are required to notify your teacher in advance.*
- *A mark of zero will be assigned for any missed test or in-class evaluation that a student 'skips'. 'skip': when a student does not attend class without prior notification to the teacher.*
- *If there is a pattern of absences (approved or otherwise), the teacher will make an effort to discuss this with you and your parent/guardian to address the concern and proceed at their discretion.*
- *The administration will also be informed of the pattern of absences and will work with the teacher to decide the most appropriate course of action.*
- *Approved absences will require the student and teacher to work out alternate arrangements for any group evaluation missed.*

Assessment & Evaluation at SBA

GROUP WORK EVALUATIONS/PRESENTATIONS

Collaboration is an important component of your course work. You are expected to be present for all group work tasks.

- Approved absences will require you and your teacher to work out alternate arrangements for any missed group evaluation.
- Your group will be required to present without you.
- If you skip class on the day of a group task, a mark of zero will be assigned.
- Students are evaluated based on their own respective contributions to the group task, in accordance with criteria set forth by the classroom teacher and the Ontario Curriculum - group marks are not assigned.



Biking, Driving and Parking at School



- Students are welcome to ride their bikes to school and make use of the bike racks near the main entrance of the building.
- Students who drive to school are required to register their vehicle at the Main Office and obtain a parking pass.
- There is no cost to students to park at school. Register HERE.
- The student parking lot is between the Main and North buildings.
- Students may not park in the staff parking lot.
- Students are not permitted to park at the community centre.
- The school is not responsible for any damages that may occur.
- Students must comply with all posted speed limits and exercise extreme caution when driving on school property.
- Failure to comply will result in immediate revocation of this privilege.

SBA is Your Home Away from Home!



We are a family of PROUD Cardinals! We are committed to treating each other and the space that we share with the utmost respect. How can we show our respect and that we care for each other's well being?

- Cleaning up after ourselves in the cafeteria and in our classrooms, showing our custodial staff that we appreciate all that they do for us.
- By showing courtesy and being polite and respectful to the office staff.
- Using garbage cans located outdoors and not littering on school grounds.
- Using shared school athletic equipment, devices and shared spaces (e.g. library, computer labs) as they are intended.
- Complying with direction from any member of the staff whose primary concern is the safety of all students.
- Following school rules and procedures with the understanding that the expectations in place are for the benefit of all.



The Student Activity Fee

Each year, we ask families to support our school through the Student Activity Fee. It is the only source of fundraising that directly impacts our school and funds are used for activities for all students.

Reminders to pay the Student Activity Fee are sent at the beginning of Semester 2 to coincide with Course Selection for the following school year. If you have not yet paid the Student Activity Fee, please visit School Day or call the Main Office.



York Catholic District School Board
Secondary Student Activity Fee
St. Brother Andre C.H.S.

The Student Activity is the **primary source of direct school fundraising** and subsidizes events and initiatives that build school spirit and support student wellbeing. We greatly appreciate the support of parents and guardians.

Itemized Breakdown	Amount
Student Engagement (e.g. special events, student recognition, guest speakers, clubs and councils)	20.00
Wellness and Inclusivity (e.g. faith development and stewardship, physical and mental wellbeing activities)	20.00
Total:	\$40.00

Note: This fee is voluntary

Catholic School Council Contribution	\$10.00
---	----------------

These funds are directly reinvested back into our school community. Various groups within the school, including departments, clubs and councils, submit proposals on the use of these funds. In consultation with the Administration, the Catholic School Council supports these various initiatives and projects that are designed to be of **direct benefit to the students.**

Total Fee to be Collected	\$50.00
----------------------------------	----------------

The Student Activity Fee can be paid via School Day, our cashless platform. Please click on the provided link for instructions on how to access school day: [SBA Incoming Grade 9s](#)

Thank you for your continued support of the St. Brother Andre C.H.S. community!

Please note: Additional and separate fees will be charged for but are not limited to the following:

- School yearbook
- Athletic and team fees
- Annual Religion retreats
- Field trips and excursions
- Course enhancement fees (vary from department to department)
- Physical and Health Education uniforms
- School spirit wear (sales promoted at specific times of the school year)
- Locks for lockers (Gr. 9)
- Grade-level events (e.g. Semi-Formal for Grade 11s and Prom and Graduation for Grade 12s)



Services Available to Students

- Chaplaincy
 - Faith-based counselling, bereavement support; access to Chapel daily
- Library Learning Commons
- Guidance
 - Counsellors by alpha
 - Be sure to bookmark the grade-level Google Classroom that applies!
- Special Education
 - Students with exceptional learning needs are supported on a roster system by a Special Education teacher.
- Student Mental Health and Wellbeing

Additional support services available by referral from the Student Success team:

1. Mental Health Worker (voluntary)
2. Behaviour Resource Worker (voluntary)
3. Attendance Counselling (requirement based on degree of absenteeism)



Other Useful Links

- [York Catholic District School Board](#)
- [OSSD Requirements](#)
- [Community Service Hours Form](#)
- [St. Brother Andre Parent and Student Master Calendar](#)
- [Government of Ontario: Education and Training](#)
- [YCDSB Mental Health Resources](#)
- [YCDSB: Parents - Working Together for our Students' Success](#)
- [Continuing Education Department](#) - summer and night school programs
- [Learning Disabilities Association of York-Simcoe](#)
- [Autism Ontario](#)
- [Ontario Universities' Application Centre \(OUAC\)](#)
- [Ontario Colleges \(OCAS\)](#)
- [People for Education](#)
- [Ontario Association of Parents in Catholic Education](#)



How Can We Help?

1

For all general school inquiries, please call the Main Office.

Questions or concerns re: course work, marks, etc. → classroom teacher.

Questions or concerns re: course selection, pathways → Guidance.

Questions or concerns re: IEP, accommodations, etc. → Special Education teacher.

2

Alpha-specific Vice Principal

Vice principals act like "case managers" and can also receive additional information that will help support students at school.

3

Principal (after contacting the Vice Principal)

4

Superintendent, Mr. Laliberte

We truly value the partnership between home and school.

We aim to build collaborative working relationships with all!

The progression of escalation should additional assistance be required.





6160 16th Avenue
Markham, ON L3P 3K8

STAY CONNECTED AND UPDATED!



@SBAToday



stbrotherandre



sba.ycdsb.ca/

Main Office: 905-294-7671, ext.6
Attendance: 905-294-7671, ext. 1
Guidance: 905-294-7671, ext. 2

